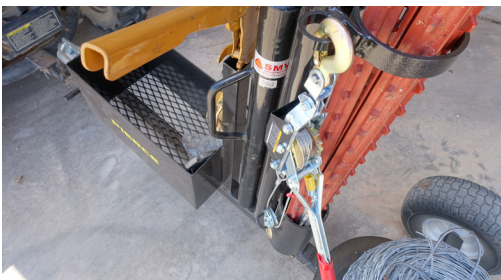
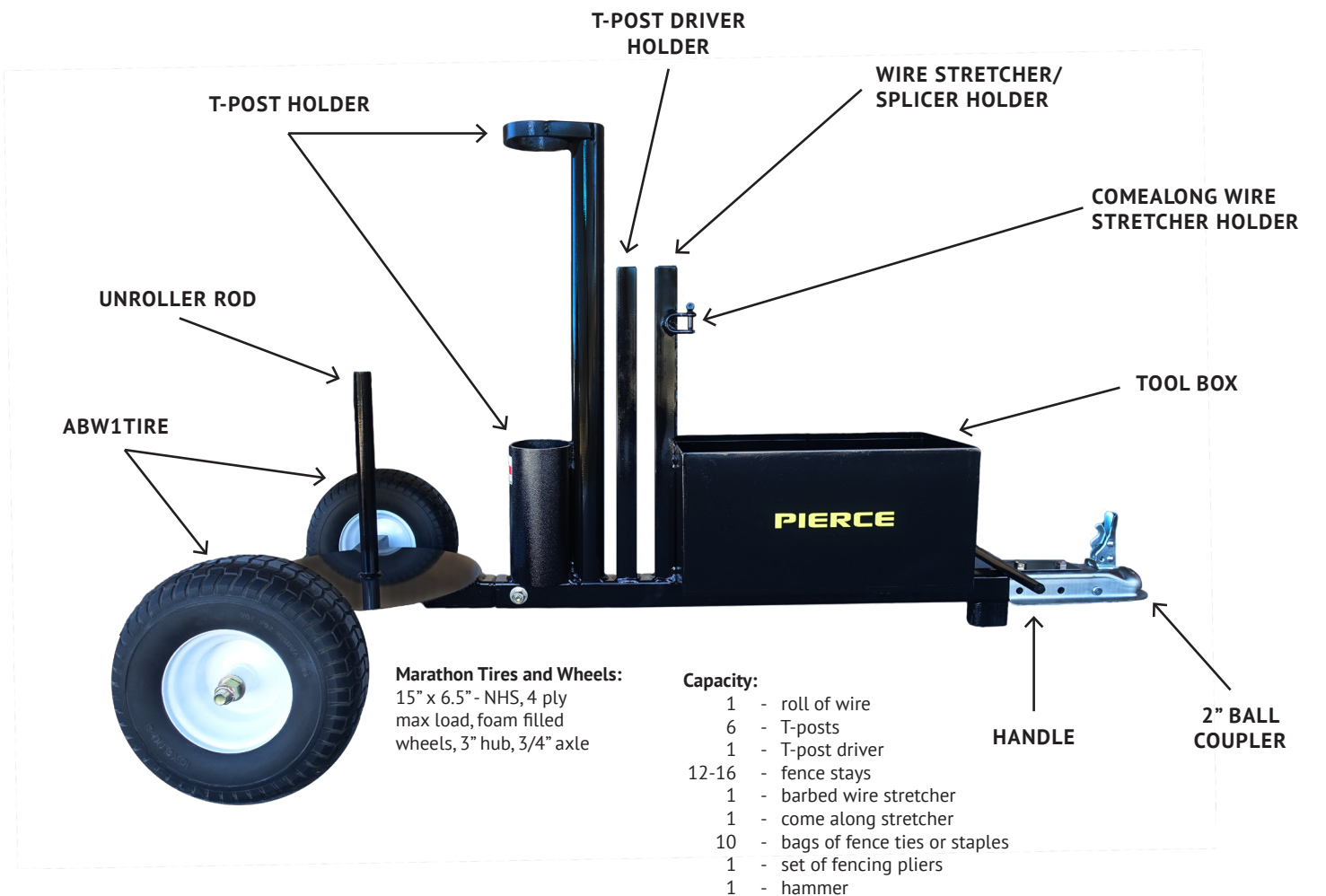


# ABWUR1V2 - FENCE REPAIR TRAILER

# PIERCE

PULLING FOR YOU



## SPECIFICATIONS

<b>Application</b>	Easily portable self-contained trailer. Perfect for fence repair, fence building, and food plots. Towed by ATV or UTV to get into tight places. Made in Henrietta, Texas.		
<b>Product Dimensions</b>	67" x 36.5" x 39"	<b>Material Type</b>	steel
<b>Product Weight</b>	120 lbs	<b>Max Capacity</b>	200 lbs
<b>Warranty</b>	Limited Lifetime (against manufacturer's defects)	<b>Marathon Tires and Wheels</b>	15" x 6.5" - NHS, 4 ply max load, foam filled wheels, 3" hub, 3/4" axle

## SAFETY WARNINGS

- **Not for highway use!**
- Make sure trailer hitch is secure before travel.
- Make sure all items on trailer are secure.
- Do not load unroller unless it is hitched to ATV/UTV.
- Do not use on steep inclines.
- Do not reverse once you start unrolling.
- Do not use excessive speed when pulling this trailer.

## INSTALLATION

- **Step 1:** Always make sure, before loading rolls of wire, that the trailer is properly secured to the ATV/UTV. This ensures that it will not become top heavy and tip over.
- **Step 2:** Sit spool of wire over the unroller rod.
- **Step 3:** Load T-post driver, T-posts, fence stays, fence ties or staples, stretcher, fencing pliers, or any other tools needed.

## FAQ

**What are the limits of the product?  
(i.e. capacity, how much weight can be applied?)**

- 1 - roll of wire
- 6 - T-posts
- 1 - T-post driver
- 12-16 - fence stays
- 1 - barbed wire stretcher
- 1 - come along stretcher
- 10 - bags of fence ties or staples
- 1 - set of fencing pliers
- 1 - hammer

**What kind of wire is recommended?**

2 or 4 point barbed wire of all types

Slick wire (horse wire)

Electric wire

Any roll of wire that fits between 15¾"