

▼ Shown: MS2-10



## The Universal Hydraulic Tool Box



### Maintenance Sets

Enerpac Maintenance sets are a complete assortment of accessories matched to hydraulic powered tools. Using these sets allows you to quickly configure a unique tool to meet your most difficult jobs.

Built around the Enerpac lightweight hand pump, hose and cylinder, these sets enable you to push, pull, lift, press, straighten, spread and clamp with forces up to 12.5 tons.

- All sets include Enerpac pump, hose, cylinder and gauge
- Lock-on or threaded connectors
- Complete set for almost every maintenance application



### More Information

For detailed information on all included attachments, see the following pages.

Page: 186



*Clamping a workpiece is just one of the many applications for the Enerpac maintenance sets. ▶*

### ▼ QUICK SELECTION CHART ▶

Capacity using attachments* (tons)	Set Model Number						Number of Attachment Components	Weight (lbs)
2.5	<b>MS2-4</b>	P-142	HC-7206	RC-55	GP-10S	GA-4	33	59
2.5	<b>MSFP-5**</b>	P-142	HC-7206	RC-55	G2535L	GA-3	24	44
5	<b>MSFP-10</b>	P-392	HC-7206	RC-106	G2535L	GA-3	23	105
5	<b>MS2-10</b>	P-392	HC-7206	RC-106	GP-10S	GA-2	35	140
12.5	<b>MS2-20</b>	P-392	HC-7206	RC-256	GP-10S	GA-2	13	210
5-12.5	<b>MS2-1020</b>	P-392	HC-7206	RC-102, -106, -256	GP-10S	GA-2	53	350

\* If no attachments are being used, capacity is double these values. Maximum operating pressure is then 10,000 psi.

\*\* This set also includes the FZ-1055 Adaptor.

# MS-Series, Maintenance Sets



**CAUTION!**  
When cylinders are used with maintenance set attachments or components, the maximum system pressure must be limited to half the rated pressure (5,000 psi).



**WARNING!**  
Only use attachments provided with set. Non-Enerpac attachments and longer extension tubes will reduce column strength, potentially creating unsafe conditions.

## MS Series



Capacity (using attachments):  
**2.5-12.5 tons**

Max. Operating Pressure (using attachments):  
**5,000 psi**

### ▼ APPLICATION EXAMPLES





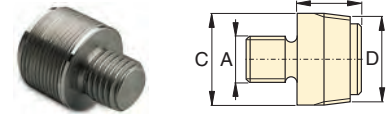
**CAUTION!** When cylinders are used with maintenance set attachments or components, the maximum system pressure must be limited to half the rated pressure (5,000 psi).

Note: All dimensions in inches.

Set Model No.	MS2-4	MSFP-5	MSFP-10	MS2-10	MS2-20	MS2-1020
<b>Base/Collar/ Plunger Attachments</b>	<b>Capacity Using Attachments</b>					
	2.5 tons	2.5 tons	5.0 tons	5.0 tons	12.5 tons	5-12.5 tons
<b>Cylinder Series</b>	RC-5	RC-5	RC-10	RC-10	RC-25	RC-10, RC-25
<b>1</b>	A-23	A-23	A-13	A-13	A-28	A-13 / A-28
<b>2</b>	A-25	A-25	A-21	A-21	A-27	A-21 / A-27
<b>3</b>	A-1034	A-1034	A-20	A-20	A-595	A-20 / A-595
<b>4</b>	MZ-4010	MZ-4010	A-14	A-14	A-243	A-14 / A-243
<b>5</b>	A-545	A-545	A-10	A-10	—	A-10(2x)
<b>6</b>	—	—	—	A-8	—	A-8
<b>7</b>	A-530	A-530	A-6	A-6	—	A-6
<b>8</b>	MZ-4011	—	—	A-192	—	A-192
<b>9</b>	—	—	—	A-305	—	A-305
<b>10</b>	A-531	A-531	A-18	A-18	—	A-18
<b>11</b>	—	—	—	A-185	—	A-185
<b>12</b>	A-532	A-532	A-15	A-15	—	A-15
<b>13</b>	—	—	—	—	A-607	A-607
<b>14</b>	A-629	A-629	A-129	A-129	—	A-129
<b>15</b>	A-539	A-539	A-128	A-128	—	A-128
<b>Chains and Attach- ments for Pulling</b>	2.5 tons	2.5 tons	5.0 tons	5.0 tons	12.5 tons	5-12.5 tons
<b>Cylinder Series</b>	RC-5	RC-5	RC-10	RC-10	RC-25	RC-10, RC-25
<b>16</b>	A-558	—	—	A-132	A-238	A-132, -238
<b>17</b>	—	—	—	A-5 (2x)	—	A-5(2x)
<b>18</b>	A-557(2x)	—	—	A-141(2x)	A-218(2x)	A-141(2x) / A-218(2x)
<b>Tubes, Connectors and Adaptors</b>	2.5 tons	2.5 tons	5.0 tons	5.0 tons	12.5 tons	5-12.5 tons
<b>Cylinder Series</b>	RC-5	RC-5	RC-10	RC-10	RC-25	RC-10, RC-25
<b>19</b>	A-544	—	—	A-19(2x)	A-242(2x)	A-19(2x) and A-242(2x)
<b>20</b>	WR-5	WR-5	WR-5	A-92	—	A-92
<b>21</b>	MZ-4013(4x)	MZ-4013(4x)	A-16(4x)	A-16(4x)	—	A-16(4x)
<b>22</b>	MZ-4007(3x)	MZ-4007(3x)	MZ-1050(3x)	MZ-1050(2x)	—	MZ-1050(3x)
<b>23</b>	MZ-4008(2x)	—	—	MZ-1051	—	MZ-1051(2x)
<b>24</b>	MZ-4009	MZ-4009	MZ-1052	MZ-1052	—	MZ-1052
<b>25</b>	—	—	—	A-285	—	A-285
<b>26</b>	A-650	—	—	—	—	—
<b>Length: 3"</b>	MZ-4002	MZ-4002	—	—	—	—
	5"	MZ-4003	MZ-4003	MZ-1002	MZ-1002	—
	10"	MZ-4004	MZ-4004	MZ-1003	MZ-1003	A-239
						and A-239
	18"	MZ-4005(2x)	MZ-4005	MZ-1004	MZ-1004	A-240
						and A-240
	23"	MZ-4006	MZ-4006	—	—	—
	30"	—	—	MZ-1005	MZ-1005	A-241
						and A-241
<b>Case</b>	CM-6	CM-6	CW-166	CW-166	CW-166	CW-350
<b>Weight</b>	59 lbs.	44 lbs.	105 lbs.	140 lbs.	210 lbs.	350 lbs.

## Base/Collar/Plunger Attachments

### 1 Threaded Adaptor



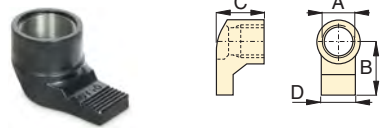
Tons	Model No.	A	B	C	D
2.5	A-23	3/4"-16 UN	1.13	1.05	3/4"-14 NPT
5.0	A-13	1"-8 UN	1.25	2.19	1 1/4"-11 1/2 NPT
12.5	A-28	1 1/2"-16 UN	1.87	2.75	2"-11 1/2 NPT

### 2 Base Attachment



Tons	Model No.	A	B	C	D
2.5	A-25	3/4"-14 NPT	2.00	.50	1.75
5.0	A-21	1 1/4"-11 1/2 NPT	2.25	.50	2.56
12.5	A-27	2"-11 1/2 NPT	2.50	.50	3.88

### 3 Collar Toe



Tons	Model No.	A	B	C	D
2.5	A-1034	1 1/2"-16	2.13	1.97	1.25
5.0	A-20	2 1/4"-14	3.16	2.25	2.25
12.5	A-595	3 3/8"-12	4.06	2.03	3.18

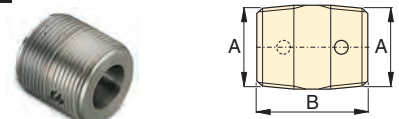
### 4 Flat Base



Tons	Model No.	A	B	C	D
2.5	MZ-4010	3/4"-14 NPT	4.50	1.25	2.50
5.0	A-14	1 1/4"-11 1/2 NPT	6.50	1.38	3.50
12.5	A-243*	2"-11 1/2 NPT	6.50	2.31	6.50

\* A-243 is a round base model

### 5 Threaded Connector



Tons	Model No.	A	B
2.5	A-545	3/4"-14 NPT	1.38
5.0	A-10	1 1/4"-11 1/2 NPT	1.63

### 6 Lock-on Clamp Toe



Tons	Model No.	A	B	C	D
5.0	A-8	1.69	4.13	2.00	2.25

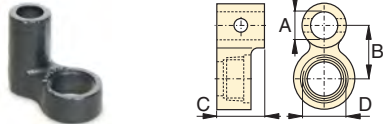
# MS-Series, Maintenance Sets

## 7 Threaded Plunger Toe



Tons	Model No.	A	B	C	D
2.5	A-530	3/4"-14 NPT	2.25	1.00	1.33
5.0	A-6	1 1/4"-11 1/2 NPT	3.12	1.25	2.25

## 8 Collar Clamp Head



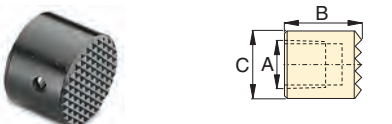
Tons	Model No.	A	B	C	D
2.5	MZ-4011	3/4"-14 NPT	1.95	3.00	1 1/2-16 UN
5.0	A-192	1.69	2.50	2.00	2 1/4-14 UN

## 9 Spreader Toe



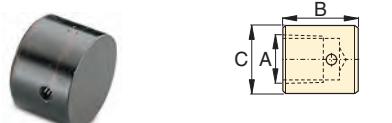
Tons	Model No.	A	B	C	D
5.0	A-305	1 1/4"-11 1/2 NPT	4.50	1.00	2.00

## 10 Serrated Saddle



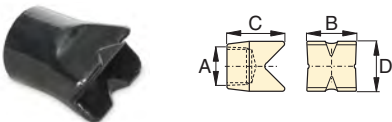
Tons	Model No.	A	B	C
2.5	A-531	3/4"-14 NPT	1.25	1.09
5.0	A-18	1 1/4"-11 1/2 NPT	2.00	1.50

## 11 Smooth Saddle



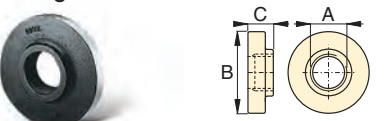
Tons	Model No.	A	B	C
5.0	A-185	1 1/4"-11 1/2 NPT	1.50	2.00

## 12 90° V-Base



Tons	Model No.	A	B	C	D
2.5	A-532	3/4"-14 NPT	1.50	1.88	1.00
5.0	A-15	1 1/4"-11 1/2 NPT	2.13	2.25	2.13

## 13 Plunger Base



Tons	Model No.	A	B	C
12.5	A-607	2"-11 1/2 NPT	6.56	1.53

## 14 Wedge Head



Tons	Model No.	A	B	C	D
2.5	A-629	3/4"-14 NPT	2.75	1.31	1.13
5.0	A-129	1 1/4"-11 1/2 NPT	4.00	2.00	1.75

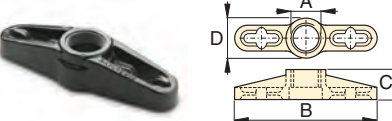
## 15 Rubber Flex-Head



Tons	Model No.	A	B	C
2.5	A-539	3/4"-14 NPT	1.75	2.75
5.0	A-128	1 1/4"-11 1/2 NPT	3.40	3.40

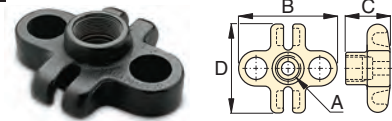
## Chains and Attachments for Pulling

### 16 Single Chain Plate



Tons	Model No.	A	B	C	D
2.5	A-558	1 1/2"-16 UN	7.75	1.56	1.75
5.0	A-132	2 1/4"-14 UN	12.12	2.50	3.12
12.5	A-238	3 5/8"-12 UN	17.75	4.03	4.93

### 17 Double Chain Plate



Tons	Model No.	A	B	C	D
5.0	A-5	1 1/4"-11 1/2 NPT	6.18	2.00	4.96

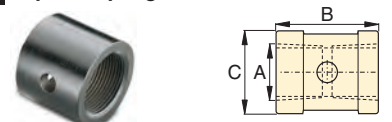
### 18 Chain with Hook



Tons	Model No.	Chain Length
2.5	A-557	5 feet
5.0	A-141	6 feet
12.5	A-218	8 feet

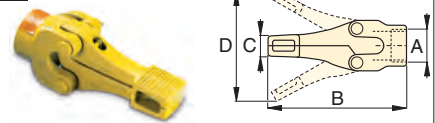
## Tubes, Connectors and Adaptors

### 19 Pipe Coupling



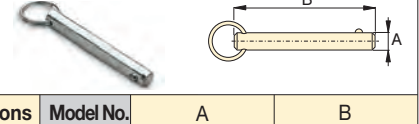
Tons	Model No.	A	B	C
2.5	A-544	3/4"-14 NPT	1.69	1.31
5.0	A-19	1 1/4"-11 1/2 NPT	1.94	2.15
12.5	A-242	2"-11 1/2 NPT	3.50	3.25

## 20 Spreader



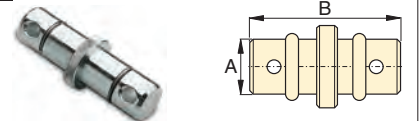
Tons	Model No.	A	B	C	D
1.0	WR-5	—	8.78	.50	3.70
1.0	A-92	2 1/4"-14 UN	9.63	1.38	6.25

## 21 Lock Pin



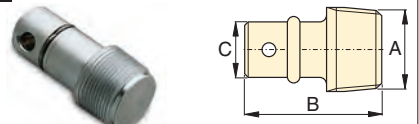
Tons	Model No.	A	B
2.5	MZ-4013	.25	2.38
5.0	A-16	.44	3.25

## 22 Lock-on Connector



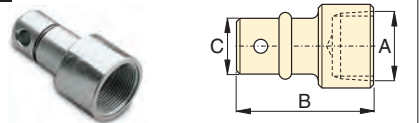
Tons	Model No.	A	B
2.5	MZ-4007	.75	3.12
5.0	MZ-1050	1.31	5.00

## 23 Male Lock-on Adaptor



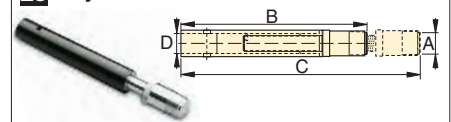
Tons	Model No.	A	B	C
2.5	MZ-4008	3/4"-14 NPT	2.38	.75
5.0	MZ-1051	1 1/4"-11 1/2 NPT	3.56	1.31

## 24 Female Lock-on Adaptor



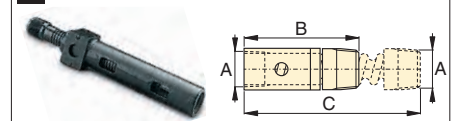
Tons	Model No.	A	B	C
2.5	MZ-4009	3/4"-14 NPT	2.56	.75
5.0	MZ-1052	1 1/4"-11 1/2 NPT	3.81	1.31

## 25 Adjustable Extension



Tons	Model No.	A	B	C	D
5.0	A-285	1 1/4"-11 1/2 NPT	13.20	17.37	1.30

## 26 Slip-Lock Extension



Tons	Model No.	A	B	C
2.5	A-650	3/4"-14 NPT	7.88	14.37