

▼ Shown from left to right: RARH-6010 and RARH-306



The Lightweight Solution for Double-Acting Applications

- Lighter and shorter collapsed height than equivalent RACH single-acting models
- Double-acting for rapid retraction, regardless of hose lengths or system losses
- Built-in safety valve prevents accidental over-pressurization
- Hollow plunger design allows for both pull and push forces
- Composite bearings increase cylinder life and side load resistance
- Hard coat finish on all surfaces resists damage and extends cylinder life
- Handles included on all models
- Floating center tube increases seal life
- Steel baseplate and saddle for protection against load-induced damage
- Integral stop ring prevents plunger over-travel and is capable of withstanding the full cylinder capacity
- CR-400 coupler and dust cap included on all models
- All cylinders meet ASME B-30.1 standards



Hoses

Enerpac offers a complete line of high-quality hydraulic hoses. To ensure the integrity of your system, specify only Enerpac hydraulic hoses.

Page: 154



Gauges

Minimize the risk of overloading and ensure long, dependable service from your equipment. Refer to the System Components section for a full range of gauges.

Page: 152



Pump Selection

A double-acting cylinder must be powered by a pump with a 4-way valve.

Page: 88



4-Way Control Valve

P-84 and P-464 pumps feature a manual 4-way control valve, designed for use with one double-acting or two single-acting cylinders. For system set-up information:

Page: 88

Cylinder Capacity (ton)	Stroke* (in)	Model Number	Maximum Cylinder Capacity @ 10,150 psi		Cylinder Effective Area		Oil Capacity	
			(ton)		(in ²)		(in ³)	
			Advance	Retract	Advance	Retract	Advance	Retract
30	1.97	RARH-302	40.30	21.00	7.94	4.14	15.63	8.14
	5.91	RARH-306	40.30	21.00	7.94	4.14	46.89	24.43
	9.84	RARH-3010	40.30	21.00	7.94	4.14	78.15	40.72
60	1.97	RARH-602	66.81	29.65	13.17	5.84	25.91	11.50
	5.91	RARH-606	66.81	29.65	13.17	5.84	77.72	34.50
	9.84	RARH-6010	66.81	29.65	13.17	5.84	129.54	57.49

* Intermediate strokes and other tonnages available upon request

Aluminium Double-Acting Hollow Plunger Cylinders



Steel Base Plate

The steel base plate protects the cylinder base from damage, it should not be removed.

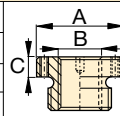
The base holes in these aluminum cylinders are designed for securing

the steel base plate. **They will not withstand the capacity of the cylinder.**

Do not use the base holes in these aluminum cylinders to attach any device to the cylinder.

Optional Threaded Hollow Saddles

Saddle Type	Cylinder Model Number	Saddle Model No.	Saddle Dimensions (in)		
			A	B	C
Threaded Hollow	RARH-302, 306, 3010	HP-3015	2.49	1¼"-7	.38
	RARH-602, 606, 6010	HP-5016	3.61	1½"-5½	.50

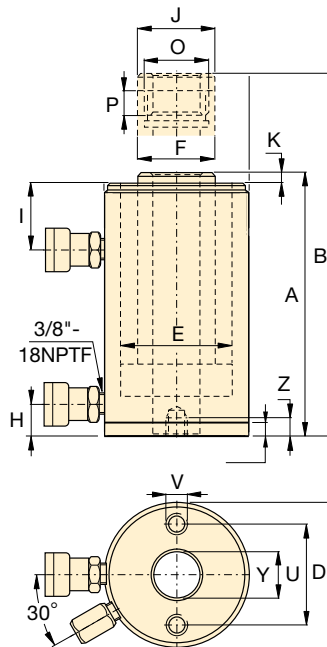


Smooth hollow saddles are standard on all RARH-models.

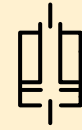
Steel Base Plate Mounting Holes

Cylinder Model / Capacity (ton)	Bolt Circle U (in)	Thread V (mm)	Thread Depth ¹⁾ Z (in)
RARH-30	4.33	M6	0.47
RARH-60	6.30	M6	0.47

¹⁾ Including Base Plate Height of .25 inches. Four (4) base plate bolts included.



RARH Series



Capacity:

30 - 60 ton

Stroke:

2-10 inch

Center Hole Diameter:

1.34-2.13 inches

Maximum Operating Pressure:

10,150 psi



RACH-Series, Single-Acting, Spring Return

To be used when a single-acting pump is available and retraction time is not critical.

Page: 16



RRH-Series Cylinders

RRH-Series, double-acting, hollow plunger cylinders available for higher capacities.

Page: 36

Collap. Height	Ext. Height	Outside Diam.	Cyl. Bore Diam.	Plngr. Diam.	Cyl. Base to Advance Port	Cyl. Top to Return Port	Saddle Diameter	Saddle Protrusion from Plunger	Plunger Internal Thread	Plunger Thread Length	Center Hole Diameter	Weight (lbs)	Model Number
A (in)	B (in)	D (in)	E (in)	F (in)	H (in)	I (in)	J (in)	K (in)	O (in)	P (in)	Y (in)		
8.22	10.19	5.31	3.74	2.95	0.86	2.53	2.49	0.38	1 ¹³ / ₁₆ "-16 UN	0.91	1.34	19.6	RARH-302
12.16	18.07	5.31	3.74	2.95	0.86	2.53	2.49	0.38	1 ¹³ / ₁₆ "-16 UN	0.91	1.34	26.2	RARH-306
16.10	25.94	5.31	3.74	2.95	0.86	2.53	2.49	0.38	1 ¹³ / ₁₆ "-16 UN	0.91	1.34	32.8	RARH-3010
9.68	11.65	7.09	5.12	4.33	1.88	3.28	3.61	0.50	2 ³ / ₄ "-16 UN	0.79	2.13	37.0	RARH-602
13.62	19.52	7.09	5.12	4.33	1.88	3.28	3.61	0.50	2 ³ / ₄ "-16 UN	0.79	2.13	48.8	RARH-606
17.56	27.40	7.09	5.12	4.33	1.88	3.28	3.61	0.50	2 ³ / ₄ "-16 UN	0.79	2.13	60.7	RARH-6010