

# STTL-SERIES SAFE T™ TORQUE LOCK

HANDS-FREE TORQUE WRENCH SYSTEM



**ENERPAC** 

▼ Shown: STTLS Safe T™ Torque Lock



## Hands-free Torque Wrench System



### Safe T™ Torque Lock

The Safe T Torque Lock is suitable for all bolted applications from 140 ft-lbs to 11,070 ft-lbs. using a heavy-duty impact socket.

The patented mechanical locking system creates a hands-free torque wrench solution suitable for Enerpac only square drive tools.

Suitable for:

<b>S-Series</b>	<b>RSQ-Series</b>
S3000X	RSQ3000
S6000X	RSQ5000
S11000X	RSQ11000



▲ Hands-free torque wrench system: STTLS-model with S-Series torque wrench. The square drive of the wrench can easily be exchanged by the Safe T Torque Lock model.



### Back-Up Spanners

Hands free tool to be used to stop back nut from turning during make up or break out.

### Safety – Safe T™ Torque Lock

- Transforming Enerpac S-Series and RSQ-Series wrenches into a dedicated hands-free tool
- Improves operator safety during bolting operations by minimizing exposure to pinch points and high-pressure hydraulic connections
- Grips securely to the application in any orientation, including inverted positions
- Minimizes drop hazards of falling tools
- Reduces operator fatigue on overreaching or awkward positioning of the tool

### Simplicity

- With one twist of the locking collar the Safe T Torque Lock grips onto the application, firmly holding the full tool weight in place
- Assembles onto the torque wrench with one push of the square drive quick-release button for tightening or loosening
- Locking feature dramatically reduces the number of tool lifts

### Versatility

- Suitable for both S-Series & RSL-Series square drive wrenches
- Simple twist & lock mechanism is user friendly, easy to operate
- No additional loose components like reaction washers are needed



## Common Torque Lock Applications:

- Oil & Gas flanges
- Tower Crane installation
- Machine installation/assembly (Mining),
- Wind Tower installation etc.

## Industries

- Oil & Gas, Petrochemical
- Wind Power Generation
- Mining
- Marine
- Manufacturing
- Rail and more

## STTL Series



Hexagon Range (A/F):  
**1<sup>13</sup>/<sub>16</sub> - 2<sup>15</sup>/<sub>16</sub> inch**

Hexagon Range (A/F)  
**46 - 75 mm**



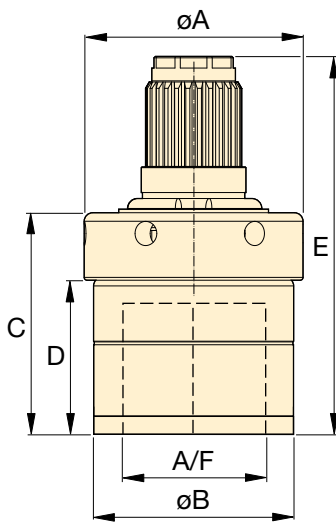
### IMPORTANT:

Safe T Torque Lock not suitable for use on PTFE coated nuts.

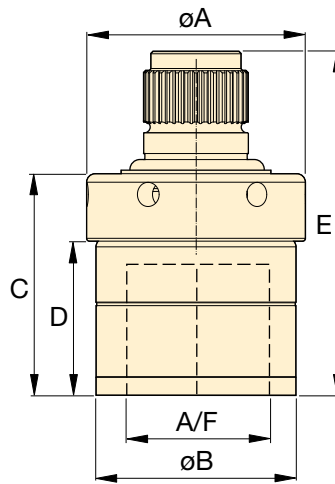


### Bolting Integrity Software

Enerpac Bolting Integrity Software Solutions play a key role in implementing and managing an Integrity Program for bolted connections. The software offers Tool selection, Bolt Load calculations and Tool pressure settings, as well as, a combined Application Data Sheet and Joint Completion Report. Custom Joint information can also be entered.



**STTLS**  
for S-Series Spline Fitting



**STTLR**  
for RSQ-Series Spline Fitting

Hexagon Sizes (A/F)	For use with torque wrench model	Safe T™ Torque Lock Model Number		Dimensions (in)					Wt. (lbs)	Dimensions (mm)					Wt. (kg)	
		For S-Series Spline Fitting	For RSQ-Series Spline Fitting	A	B	C	D	E		A	B	C	D	E		
1 <sup>13</sup> / <sub>16</sub>	46	S3000X	STTLS 31046	-	3.0	2.8	3.1	2.1	5.2	4.4	77	71	78	54	133	2.0
		RSQ3000	-	STTLR 31046					4.8	4.2					121	1.9
2 <sup>3</sup> / <sub>16</sub>	55	S3000X	STTLS 31055	-	3.7	3.4	3.3	2.3	5.4	6.6	93	86	83	58	138	3.0
		RSQ3000	-	STTLR 31055					5.1	6.4					130	2.9
-	60	S6000X	STTLS 61560M	-	3.9	3.6	3.4	2.5	5.9	8.2	99	92	86	62	150	3.7
		RSQ5000	-	STTLR 51560M					5.7	8.2					145	3.7
2 <sup>9</sup> / <sub>16</sub>	65	S6000X	STTLS 61565	-	4.2	3.9	4.2	2.9	6.8	11.7	107	100	108	74	172	5.3
		RSQ5000	-	STTLR 51565					6.6	11.9					168	5.4
2 <sup>15</sup> / <sub>16</sub>	75	S6000X	STTLS 61575	-	4.4	4.1	4.4	3.1	7.0	12.3	112	105	113	80	177	5.6
		RSQ5000	-	STTLR 51575					6.9	13.2					173	5.8
-	60	S11000X	STTLS 111560M	-	3.9	3.6	3.4	2.5	6.6	9.3	99	92	86	62	167	4.2
		RSQ11000	-	STTLR 111560M					6.1	9.3					156	4.2
2 <sup>9</sup> / <sub>16</sub>	65	S11000X	STTLS 111565	-	4.2	3.9	4.2	2.9	7.5	12.8	107	100	107	74	189	5.8
		RSQ11000	-	STTLR 111565					7.0	12.8					178	5.8
2 <sup>15</sup> / <sub>16</sub>	75	S11000X	STTLS 111575	-	4.4	4.1	4.4	3.1	7.7	13.2	112	105	113	80	195	6.0
		RSQ11000	-	STTLR 111575					7.2	13.2					183	6.0



# THE RIGHT TOOL MAKES ALL THE DIFFERENCE

Enerpac bolting tools are put to work under the most intense and demanding conditions. That's why we never compromise! So you can rely on quality and precision every time for your controlled tightening and joint integrity applications

As a global market leader in high-pressure hydraulic tools, controlled force products and solutions for the precision positioning of heavy loads, Enerpac products have moved and maintained some of the largest structures on earth. They are the industry standard in aerospace, infrastructure, manufacturing, mining, oil & gas, power generation and much more.

**ELITE TOOLS. FOR ELITE PROFESSIONALS.**

## Controlled Tightening and Loosening



S-, W-, RSL-, DSX, RSL and HMT-Series Hydraulic Torque Wrenches



STTL-Series Safe T™ Torque Lock



Manual Torque Multipliers



Pneumatic and Electric Torque Wrenches



Cordless Torque Pumps



Electric Torque Pumps



Pneumatic Torque Pumps

## Tensioning Tools



Power Generation Bolt Tensioners



HydraMax, General Purpose and Aquajack® Subsea Tensioners



Electric Tensioning Pumps



Pneumatic Tensioning Pumps



High-Pressure Hand Pumps

## Joint Assembly & Joint Separation



Hydraulic Nut Cutters and Nut Splitters



Flange Alignment Tools



Mechanical Flange Face Tool



Step-Type Flange Spreaders



Valve Change-Out Tool Sets



Flange Puller Sets



### Enerpac Worldwide Locations

For a complete list of addresses see: [www.enerpac.com/en/enerpac-locations](http://www.enerpac.com/en/enerpac-locations)  
User Inquiries: 800-433-2766 Distributor Inquiries: 800-558-0530

[www.enerpac.com](http://www.enerpac.com)