

4

3

2

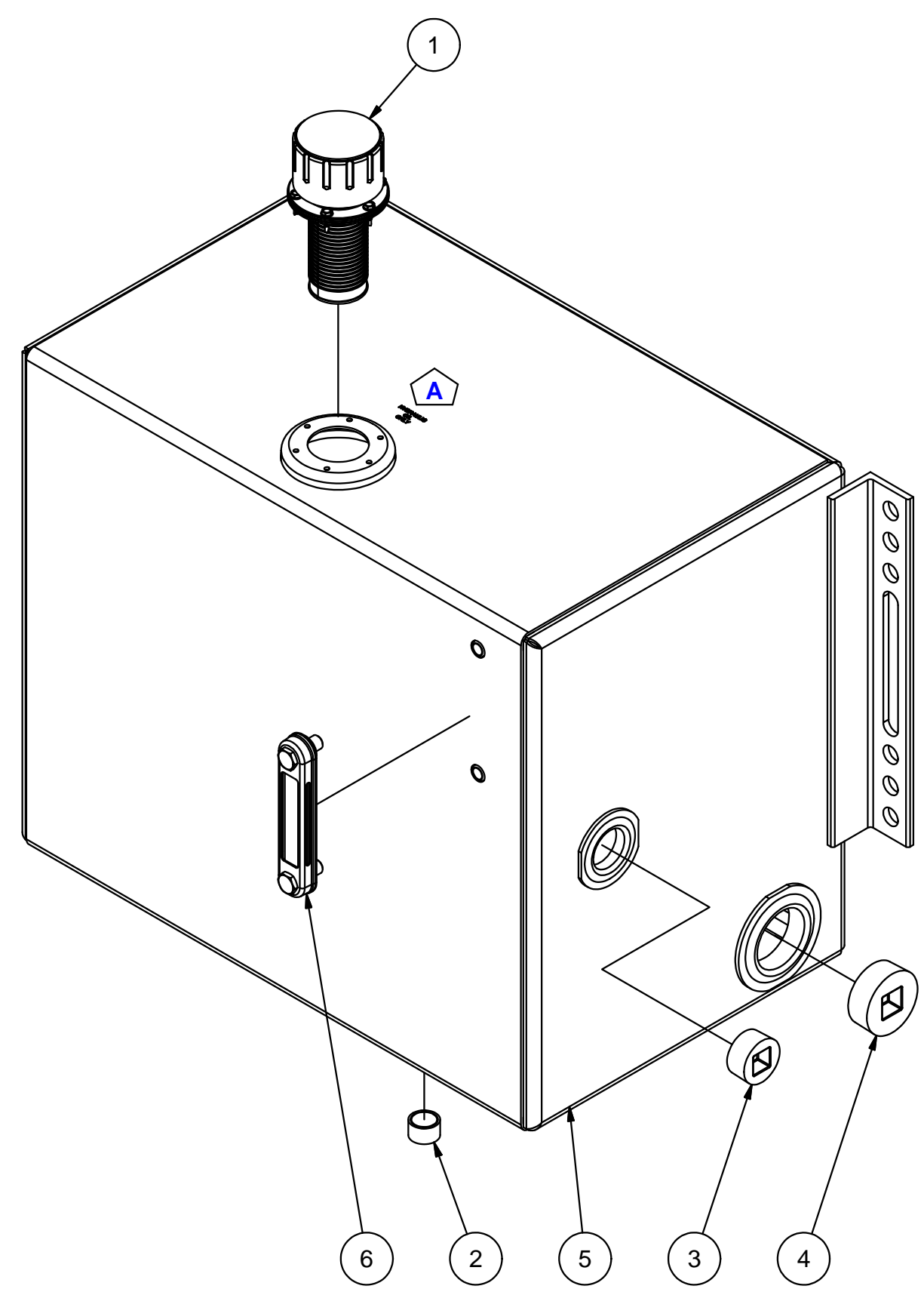
1

B

B

A

A



Parts List

ITEM	QTY	PART NUMBER	DESCRIPTION
1	1	57XL-40N	40 MICRON FILL W/NYLON STRAINER
2	1	APP0750-M	3/4" NPT MAG PLUG
3	1	APP1250	1 1/4" NPT SQUARE SOCKET PLUG
4	1	APP2000	2" NPT SQUARE SOCKET PLUG
5	1	N_A3300	NAM WELDMENT ~87 1/4 lbs
6	1	T-LLG-5	SIGHT/TEMP. GAUGE, 5"

NOTES:  
 -POWDER COAT BLACK  
 -APPLY RUST INHIBITOR INSIDE  
 -PLUG ALL PORTS FOR SHIPMENT

DATE	SYM.	DESCRIPTION	BY
7-11-07	A	ADD "HYDRAULIC OIL ONLY" STAMP	BPK
3-23-06	N/A	DEMOTED TANK ASSEMBLY TO N_A3300	BPK
3/17/05	N/A	UPDATED ASSEMBLY AND PARTS LIST	BPK

REVISIONS

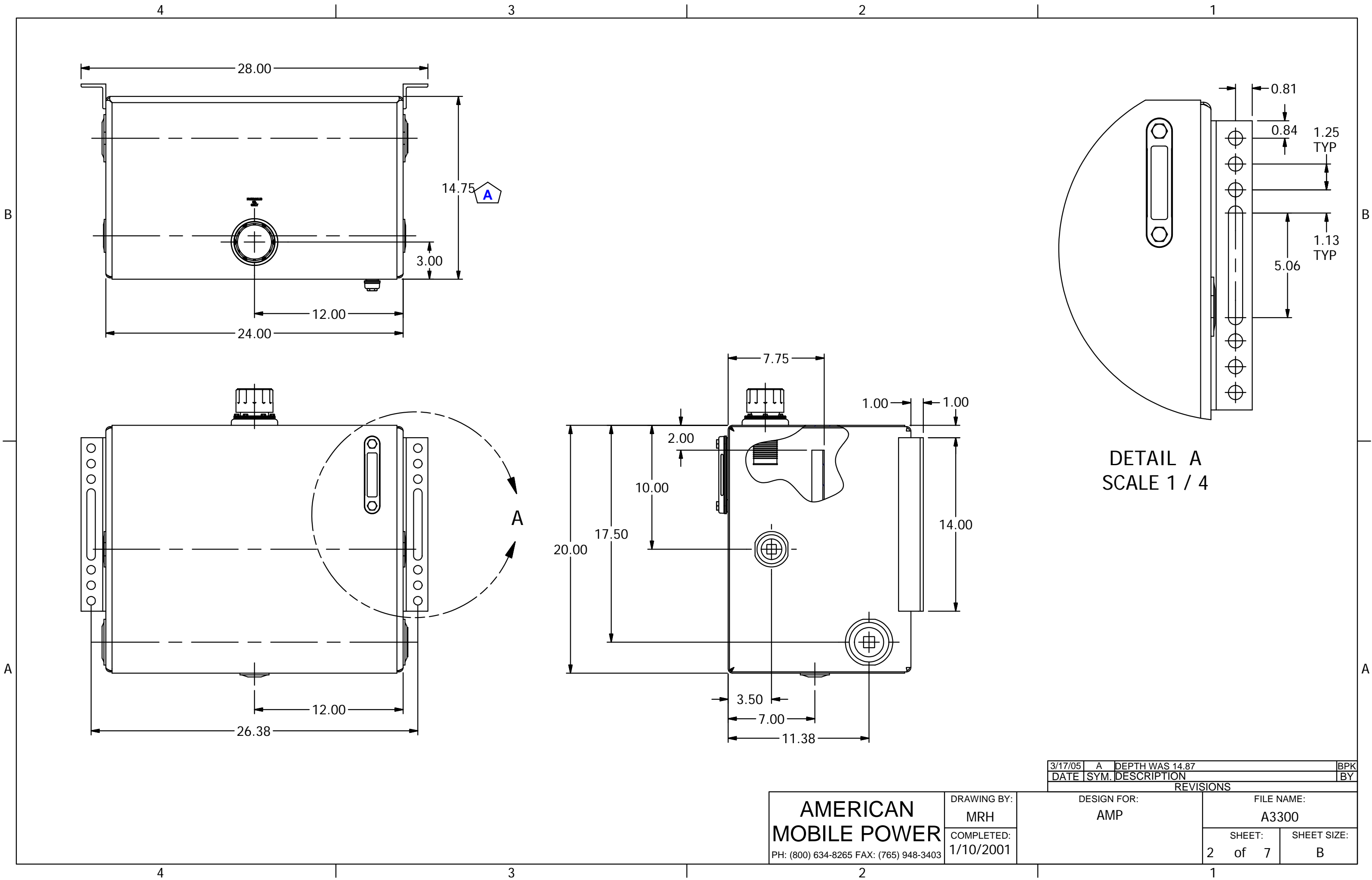
<b>AMERICAN MOBILE POWER</b> PH: (800) 634-8265 FAX: (765) 948-3403	DRAWING BY: MRH	DESIGN FOR: AMP	FILE NAME: A3300	
	COMPLETED: 1/10/2001		SHEET: 1 of 7	SHEET SIZE: B

4

3

2

1

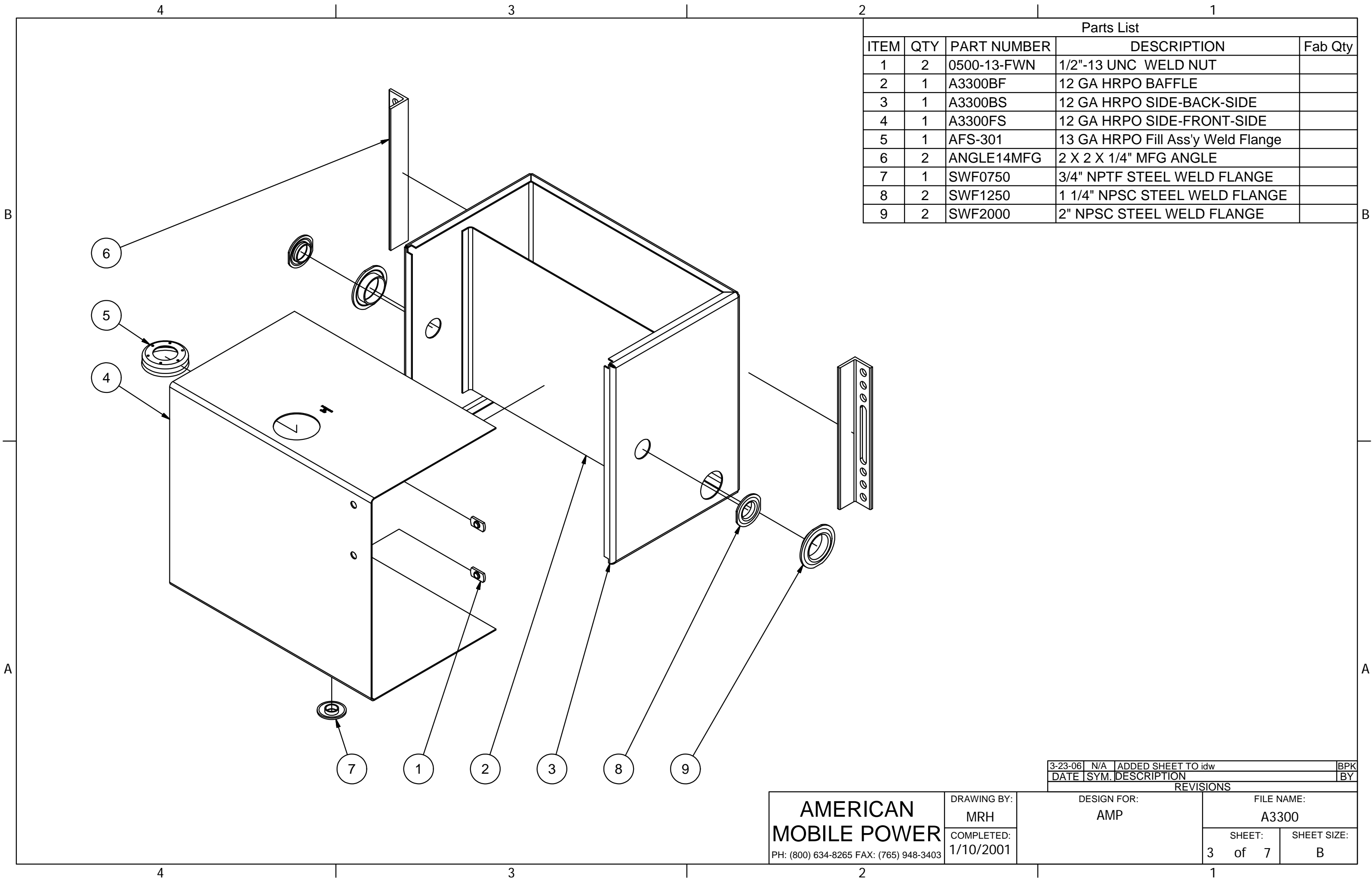


DATE	SYM.	DESCRIPTION	BY
3/17/05	A	DEPTH WAS 14.87	BPK

REVISIONS		DESIGN FOR:	FILE NAME:
		AMP	A3300
		SHEET:	SHEET SIZE:
		2 of 7	B

**AMERICAN  
MOBILE POWER**  
PH: (800) 634-8265 FAX: (765) 948-3403

DRAWING BY:  
MRH  
COMPLETED:  
1/10/2001



Parts List				
ITEM	QTY	PART NUMBER	DESCRIPTION	Fab Qty
1	2	0500-13-FWN	1/2"-13 UNC WELD NUT	
2	1	A3300BF	12 GA HRPO BAFFLE	
3	1	A3300BS	12 GA HRPO SIDE-BACK-SIDE	
4	1	A3300FS	12 GA HRPO SIDE-FRONT-SIDE	
5	1	AFS-301	13 GA HRPO Fill Ass'y Weld Flange	
6	2	ANGLE14MFG	2 X 2 X 1/4" MFG ANGLE	
7	1	SWF0750	3/4" NPTF STEEL WELD FLANGE	
8	2	SWF1250	1 1/4" NPSC STEEL WELD FLANGE	
9	2	SWF2000	2" NPSC STEEL WELD FLANGE	

DATE	SYM.	DESCRIPTION	BY
3-23-06	N/A	ADDED SHEET TO idw	BPK

REVISIONS

<b>AMERICAN MOBILE POWER</b> PH: (800) 634-8265 FAX: (765) 948-3403	DRAWING BY: MRH	DESIGN FOR: AMP	FILE NAME: A3300	
	COMPLETED: 1/10/2001		SHEET: 3 of 7	SHEET SIZE: B